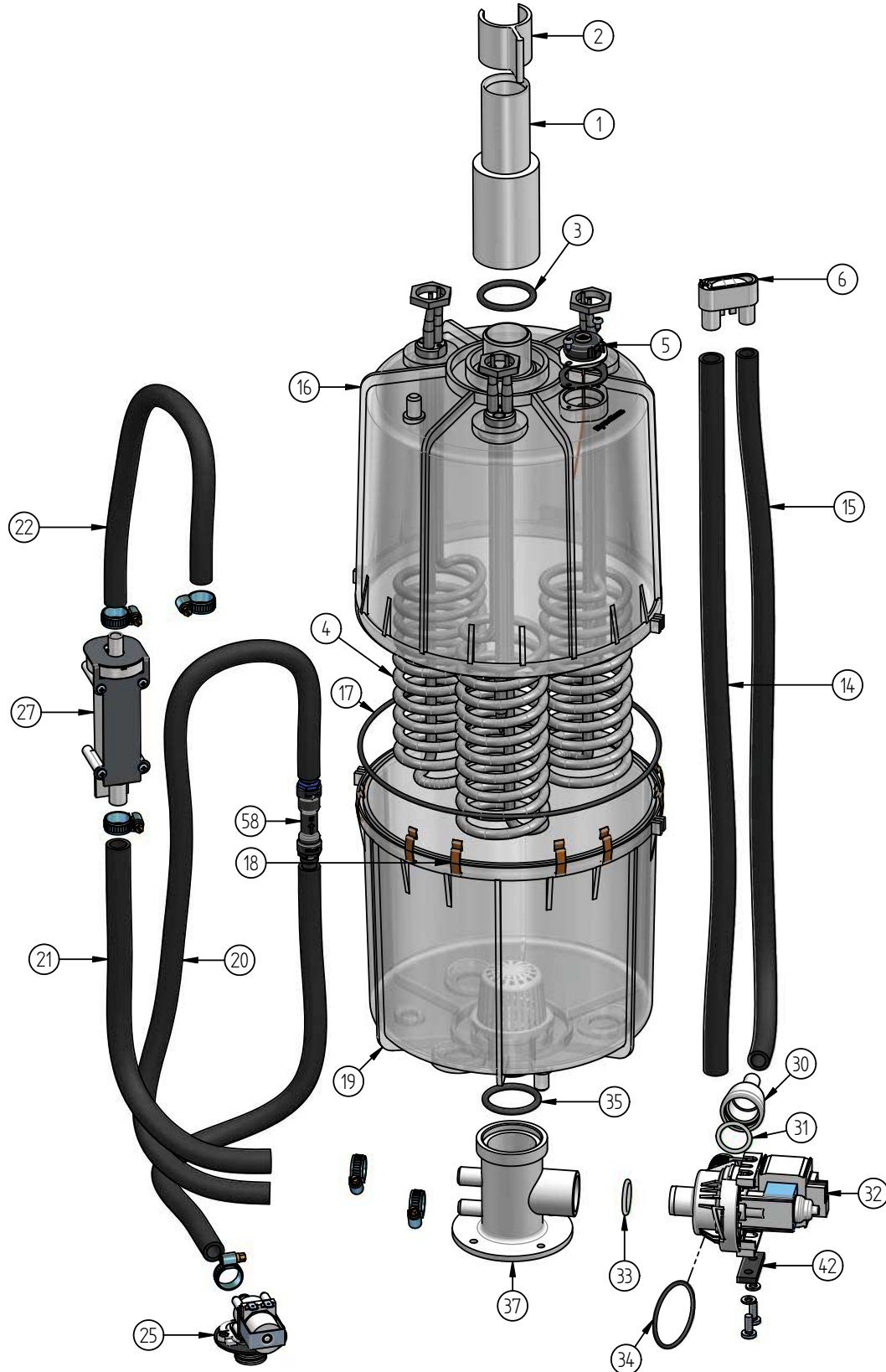


**16. Exploded view**

The figure following shows the SLH25 model composition. The number of cylinders and heater elements vary with respect to the complete SLH series.

The index numbers in the figure correspond to the spare parts list.



## 14. Spare Parts

*	SLH03	SLH06	SLH09	SLH15	SLH25	SLH40	SLH50	Article No.	Description
<b>Steam generation</b>									
16	1							SP-03-01010	Steam cylinder SLH03 CY08 220-240V, incl. O-ringset
16		1						SP-03-01040	Steam cylinder SLH06 CY08 220-240V, incl. O-ringset
16		1						SP-03-01041	Steam cylinder SLH06 CY08 380-415V, incl. O-ringset
16			1					SP-03-01070	Steam cylinder SLH09 CY08 380-415V, incl. O-ringset
16				1				SP-04-01011	Steam cylinder SLH15 CY17 380-415V, incl. O-ringset
16					1			SP-04-01040	Steam cylinder SLH25 CY17 380-415V, incl. O-ringset
16						1		SP-06-01010	Steam cylinder SLH40 CY45 380-415V, incl. O-ringset
16							1	SP-06-01040	Steam cylinder SLH50 CY45 380-415V, incl. O-ringset
	1	1	1					AC-03-01000	O-ringset (Pos. 3, 17, 31, 33, 34, 35)
				1	1			AC-04-01000	O-ringset (Pos. 3, 17, 31, 33, 34, 35)
						1	1	AC-06-01000	O-ringset (Pos. 3, 17, 31, 33, 34, 35)
4	1							SP-03-01100	Heating element CY08 3kg 230V, incl. gaskets
4		1						SP-03-01101	Heating element CY08 6kg 230V, incl. gaskets
4		1						SP-03-01102	Heating element CY08 6kg 400V, incl. gaskets
4			1					SP-03-01105	Heating element CY08 9kg 400V, incl. gaskets
4				3		3		SP-07-01101	Heating element CY17/45 5kg 400V, incl. gasket
4					3	3	6	SP-07-01104	Heating element CY17/45 8,4kg 400V, incl. gasket
5	1	1	1	1	1	2	2	B-2205031	Thermal circuit breaker steam cylinder incl. incl. gasket, clips
27	1	1	1	1	1	1	1	CN-07-01010	Water level sensor complete with cable
1	1	1	1					E-2209018	Adapter for Steam hose for cylinder CY08 DN40-25
1				1	1	2	2	E-2209008	Adapter for Steam hose for cylinder CY17/45 DN40-40
2	1	1	1	1	1	2	2	E-2209002	Clip for adapter
<b>Water feed</b>									
25	1	1	1					WF-03-00010	Solenoid valve SLH03-09 220-240V 0,2 - 10bar with mounting set
25				1	1			WF-04-00010	Solenoid valve SLH15-25 220-240V 0,2 - 10bar with mounting set
25						1	1	WF-06-00010	Solenoid valve SLH40-50 220-240V 0,2 - 10bar with mounting set
	1	1	1					WF-03-01001	Water feed hose system incl. Cylinder base and mounting set
				1	1			WF-04-01001	Water feed hose system incl. Cylinder base and mounting set
						1	1	WF-06-01001	Water feed hose system incl. Cylinder base and mounting set
56	1	1	1	1	1	1	1	B-2304031	Water inlet hose connection, 0.6m 3/4"
<b>Water drain</b>									
	1	1	1					B-2425005	Pump-drain-hose-system (Pos. 6, 14, 15, 30, 31)
				1	1	1	1	B-2425009	Pump-drain-hose-system (Pos. 6, 14, 15, 30, 31)
	1	1	1	1	1	1	1	B-2404027	Drain pump without mounting set, with 2 o-rings
	1	1	1	1	1	1	1	B-2424014	Mounting set for drain pump

*	SLH03	SLH06	SLH09	SLH15	SLH25	SLH40	SLH50	Article No.	Description
									<b>Electrics</b>
	1	1	1					E-2510010	Main contactor 25A, K1.1- SLH03-09
				1	1			E-2510020	Main contactor 32A, K1.1- SLH15-25
						1	1	E-2510020	Main contactor 32A, K1.2- SLH40-50
						1	1	E-2510030	Main contactor 50A, K1.1- SLH40-50
	1	1	1					CN-03-01000	Solid state relay for SLH03-09 incl. heatsink & temp. limiter
				1	1	1	1	CN-07-01000	Solid state relay for SLH15-50 incl. heatsink & temp. limiter
	1	1	1					WR-03-01000	Connector e- compartment - water compartment, plug + socket
				1	1	2	2	WR-07-01000	Connector e- compartment - water compartment, plug + socket
	1	1	1	1	1	1	1	CN-07-00000	Mainboard incl. Plug
59	1	1	1	1	1	1	1	E-0510010	Display
	1	1	1	1	1	1	1	E-0510012	Clip for display
51	1	1	1	1	1	1	1	E-2502412	Control switch, double pole, middle position = "0"
									<b>Accessories</b>
70								E-2604012	Steam hose DN25, per m
70								E-2604013	Steam hose DN40, per m
57								E-2420423	Drain hose 1 1/4", per m
								E-2604002	Condensate hose DN12, per m
								E-2404004	Steam hose clamp DN25
								E-2604016	Steam hose clamp DN40
								E-2404010	Clamp for drain hose 1 1/4"
								E-8501064	Condensate hose clamp
								E-2604042	Connectors for steam distribution T- piece DN25, stainless steel
								E-2604023	Connectors for steam distribution T- piece DN40, stainless steel
								E-2604021	Connectors for condensate T- piece DN12
<b>If you order any spare parts, please specify type and serial number of the unit.</b>									
* see Exploded View									

For ordering spare parts, a template can be found on the [www.hygromatik.com](http://www.hygromatik.com) website under the „Contact“ tab. Your spare parts order may as well be directed per e-mail to the HygroMatik main office using the address [hy@hygromatik.de](mailto:hy@hygromatik.de).

Please make sure to specify your unit model and serial number.