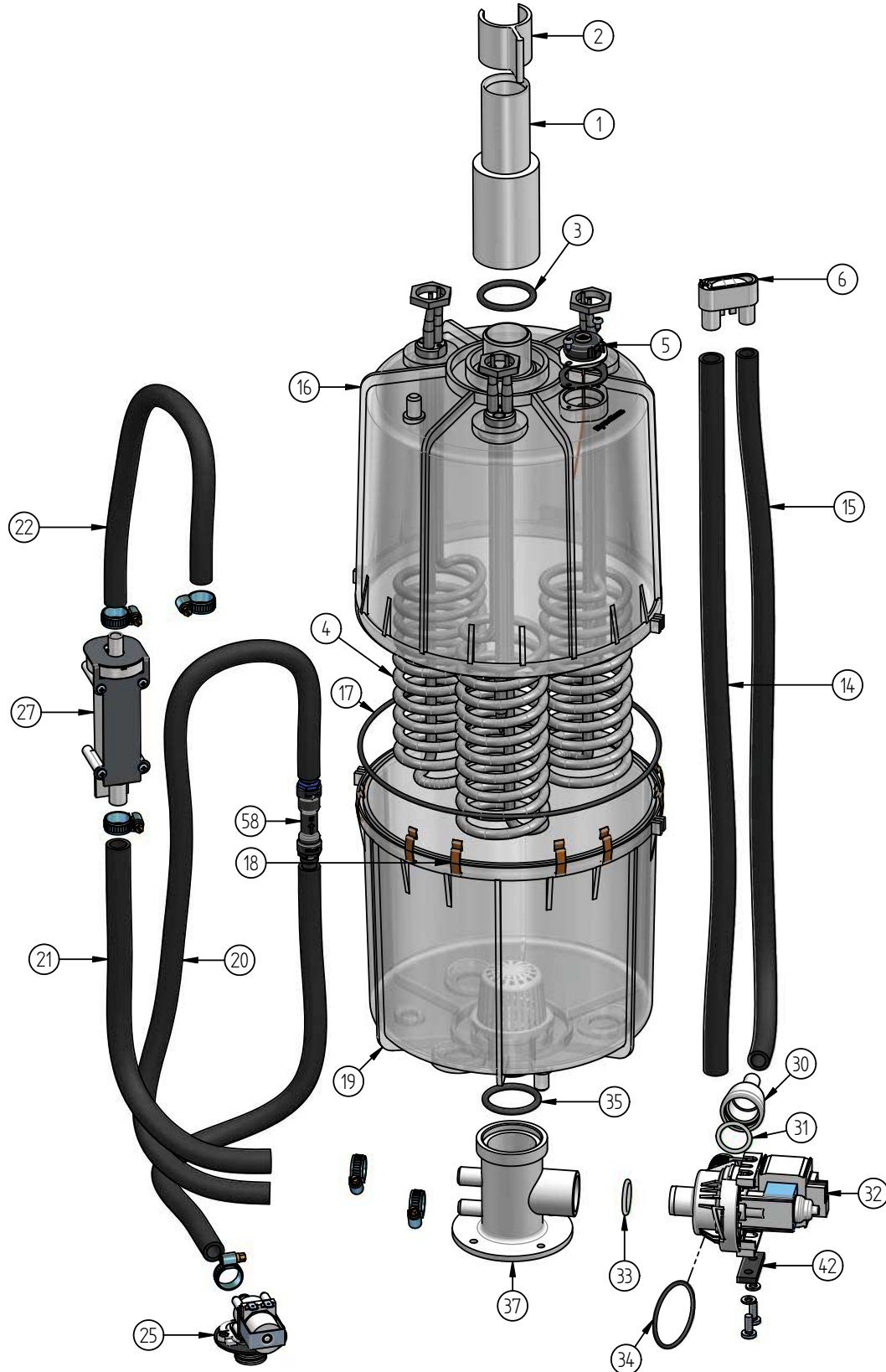


## 14. Exploded view

The figure following shows the FLH/SLH25 model composition. The number of cylinders and heater elements vary with respect to the complete FLH/SLH series.

The index numbers in the figure correspond to the spare parts list.



## 12. Spare Parts

*	FLH03	FLH06	FLH09	FLH15	FLH25	FLH30	FLH40	FLH50	FLH80	FLH100	Article No.	Description
<b>Steam generation 220-240V</b>												
16	1										SP-03-01020	Steam cylinder FLH03 CY08 220-240V, incl. O-ringset
16		1									SP-03-01050	Steam cylinder FLH06 CY08 220-240V, incl. O-ringset
16			1								SP-04-01020	Steam cylinder FLH15 CY17 220-240V, incl. O-ringset
16						1					SP-06-01080	Steam cylinder FLH30 CY45 220-240V, incl. O-ringset
4	1										SP-03-01100	Heating element CY08 3kg 220-240V, incl. gaskets
4		1									SP-03-01101	Heating element CY08 6kg 220-240V, incl. gaskets
4			3			6					SP-07-01100	Heating element CY17/45 6kg 220-240V, incl. gasket
<b>Steam generation 380-415V</b>												
16		1									SP-03-01051	Steam cylinder FLH06 CY08 380-415V, incl. O-ringset
16			1								SP-03-01080	Steam cylinder FLH09 CY08 380-415V, incl. O-ringset
16				1							SP-04-01021	Steam cylinder FLH15 CY17 380-415V, incl. O-ringset
16						1					SP-04-01050	Steam cylinder FLH25 CY17 380-415V, incl. O-ringset
16							1				SP-86-01081	Steam cylinder FLH30 CY17 380-415V, incl. O-ringset
16							1		2		SP-06-01021	Steam cylinder FLH40/80 CY45 380-415V, incl. O-ringset
16								1		2	SP-06-01050	Steam cylinder FLH50/100 CY45 380-415V, incl. O-ringset
4		1									SP-03-01102	Heating element CY08 6kg 380-415V, incl. gaskets
4			1								SP-03-01105	Heating element CY08 9kg 380-415V, incl. gaskets
4				3		6	3		6		SP-07-01101	Heating element CY17/45 5kg 380-415V, incl. gasket
4					3		3	6	6	12	SP-07-01104	Heating element CY17/45 8.4kg 380-415V, incl. gasket
<b>Steam generation 440-480V</b>												
16		1									SP-03-01052	Steam cylinder FLH06 CY08 440-480V, incl. O-ringset
16			1								SP-03-01081	Steam cylinder FLH09 CY08 440-480V, incl. O-ringset
16				1							SP-04-01022	Steam cylinder FLH15 CY17 440-480V, incl. O-ringset
16						1					SP-04-01051	Steam cylinder FLH25 CY17 440-480V, incl. O-ringset
16							1				SP-06-01082	Steam cylinder FLH30 CY17 440-480V, incl. O-ringset
16							1		2		SP-06-01022	Steam cylinder FLH40/80 CY45 440-480V, incl. O-ringset
16								1		2	SP-06-01051	Steam cylinder FLH50/100 CY45 440-480V, incl. O-ringset
4		1									SP-03-01103	Heating element CY08 6kg 440-480V, incl. gaskets
4			1								SP-03-01107	Heating element CY08 9kg 440-480V, incl. gaskets
4				3		6	3		6		SP-07-01102	Heating element CY17/45 5kg 440-480V, incl. gasket
4					3		3	6	6	12	SP-07-01105	Heating element CY17/45 8.4kg 440-480V, incl. gasket
<b>Steam generation 600-690V</b>												
16		1									SP-03-01053	Steam cylinder FLH06 CY08 600-690V, incl. O-ringset
16			1								SP-03-01082	Steam cylinder FLH09 CY08 600-690V, incl. O-ringset
16				1							SP-04-01023	Steam cylinder FLH15 CY17 600-690V, incl. O-ringset
16						1					SP-04-01052	Steam cylinder FLH25 CY17 600-690V, incl. O-ringset
16							1				SP-06-01083	Steam cylinder FLH30 CY17 600-690V, incl. O-ringset
16							1		2		SP-06-01023	Steam cylinder FLH40/80 CY45 600-690V, incl. O-ringset
16								1		2	SP-06-01052	Steam cylinder FLH50/100 CY45 600-690V, incl. O-ringset
4		1									SP-03-01104	Heating element CY08 6kg 600-690V, incl. gaskets
4			1								SP-03-01107	Heating element CY08 9kg 600-690V, incl. gaskets
4				3		6	3		6		SP-07-01103	Heating element CY17/45 5kg 600-690V, incl. gasket
4					3		3	6	6	12	SP-07-01106	Heating element CY17/45 8.4kg 600-690V, incl. gasket
<b>Steam generation general</b>												
	1	1	1								AC-03-01000	O-ringset (Pos. 3, 17, 31, 33, 34, 35)
				1	1						AC-04-01000	O-ringset (Pos. 3, 17, 31, 33, 34, 35)
						1	1	1	2	2	AC-06-01000	O-ringset (Pos. 3, 17, 31, 33, 34, 35)
5	1	1	1	1	1	2	2	2	4	4	B-2205031	Thermal circuit breaker steam cylinder incl. gasket, clips
27	1	1	1	1	1						CN-07-01010	Water level sensor complete with cable, short
27							1	1	2	2	CN-07-01012	Water level sensor complete with cable, long
1	1	1	1								E-2209018	Adapter for Steam hose for cylinder CY08 DN40-25
1				1	1	2	2	2	4	4	E-2209008	Adapter for Steam hose for cylinder CY17/45 DN40-40
2	1	1	1	1	1	2	2	2	4	4	E-2209002	Clip for adapter
<b>Water feed</b>												
25	1	1	1								WF-03-00012	Solenoid valve FLH03-09 220-240V 0,2 - 10bar with mounting set
25				1	1						WF-04-00012	Solenoid valve FLH15-25 220-240V 0,2 - 10bar with mounting set
25						1	1	1	2	2	WF-06-00012	Solenoid valve FLH40-50 220-240V 0,2 - 10bar with mounting set
	1	1	1								WF-03-01001	Water feed hose system (Pos: 20, 21, 22, 58, 37, 39)
				1	1						WF-04-01001	Water feed hose system (Pos: 20, 21, 22, 58, 37, 39)
						1	1	1	2	2	WF-06-01001	Water feed hose system (Pos: 20, 21, 22, 58, 37, 39)
56	1	1	1	1	1	1	1	1	2	2	B-2304031	Water inlet hose connection, 0,6m 3/4"
<b>Water drain</b>												
	1	1	1								B-2425005	Pump-drain-hose-system incl. o-ring (Pos. 6, 14, 15, 30, 31)
				1	1	1	1	1	2	2	B-2425009	Pump-drain-hose-system incl. o-ring (Pos. 6, 14, 15, 30, 31)
	1	1	1	1	1	1	1	1	2	2	B-2404027	Drain pump without mounting set Pos: (Pos. 31, 32, 33)
	1	1	1	1	1	1	1	1	2	2	B-2424014	Mounting set for drain pump

*	FLH03	FLH06	FLH09	FLH15	FLH25	FLH30	FLH40	FLH50	FLH80	FLH100	Article No.	Description
<b>Electrics</b>												
<b>Main contactor 380-415V</b>												
	1	1	1								E-2507040	Main contactor 20A, K1.1 - FLH03-09
				1	1						E-2507060	Main contactor 35A, K1.1 - FLH15-25
						1					E-2510020	Main contactor 35A, K1.1 - FLH30
						1					E-2507040	Main contactor 20A, K1.2 - FLH30
							1		2		E-2507070	Main contactor 50A K1.1 - FLH40/80
							1		3		E-2510020	Main contactor 35A K1.2 - FLH40/80
								1		2	E-2507080	Main contactor 65A, K1.1 - FLH50/100
								1		3	E-2510020	Main contactor 35A K1.2 - FLH50/100
1	1	1									CN-03-01000	Solid state relay for FLH03-09 incl. heatsink & temp. limiter
				1	1	1	1	1			CN-07-01000	Solid state relay for FLH15-50 incl. heatsink & temp. limiter
									1	1	B-2602009	Solid state relay for FLH80-100 incl. heatsink & temp. limiter
1	1	1									WR-03-01010	Connector e-compartment - water compartment, plug + socket
				1	1	2	2	2	4	4	WR-07-01010	Connector e-compartment - water compartment, plug + socket
1	1	1	1	1	1	1	1	1	1	1	CN-07-00020	Mainboard incl. Plug, fuse 2.5A
1	1	1	1	1	1	1	1	1	1	1	CN-07-00025	Mainboard incl. Plug, fuse 0.5A
									1	1	CN-07-00030	Extension board double cylinder FlexLine
1	1	1	1	1	1	1	1	1	1	1	CN-07-00021	Touch Display FlexLine
1	1	1	1	1	1	1	1	1	1	1	E-2502412	Control switch, double pole, middle position = "0"
<b>Accessories</b>												
70											E-2604012	Steam hose DN25, per m
70											E-2604013	Steam hose DN40, per m
57											E-2420423	Drain hose 1 1/4", per m
											E-2604002	Condensate hose DN12, per m
											E-2404004	Steam hose clamp DN25
											E-2604016	Steam hose clamp DN40
											E-2404010	Clamp for drain hose 1 1/4"
											E-8501064	Condensate hose clamp
											E-2604042	Connectors for steam distribution T-piece DN25, stainless steel
											E-2604023	Connectors for steam distribution T-piece DN40, stainless steel
											E-2604021	Connectors for condensate T-piece DN12

If you order any spare parts, please specify type and serial number of the unit.  
 \* see Exploded View

For ordering spare parts, a template can be found on the [www.hygromatik.com](http://www.hygromatik.com) website under the „Contact“ tab. Your spare parts order may as well be directed per e-mail to the HygroMatik main office using the address [hy@hygromatik.de](mailto:hy@hygromatik.de).

Please make sure to specify your unit model and serial number.