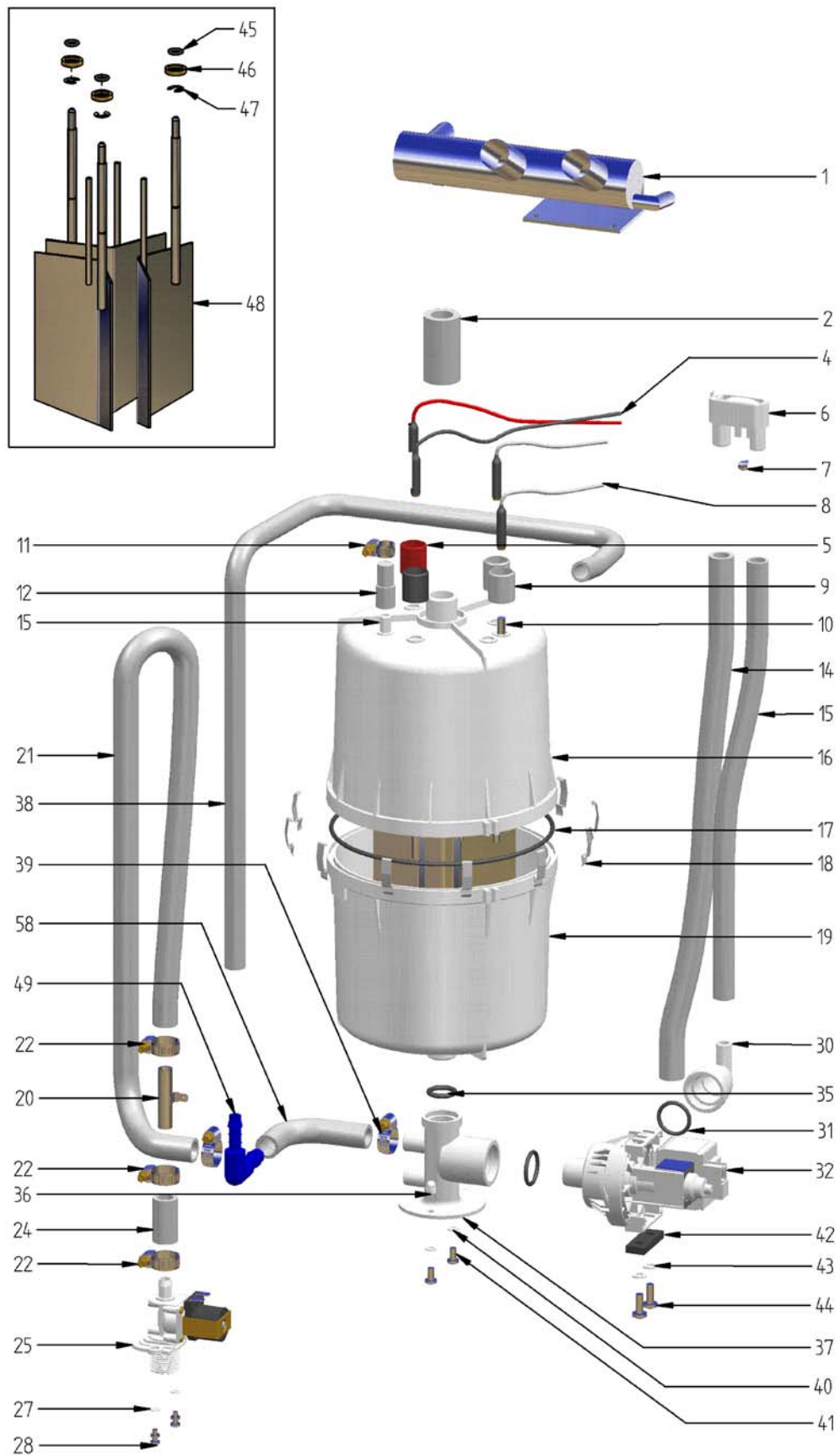
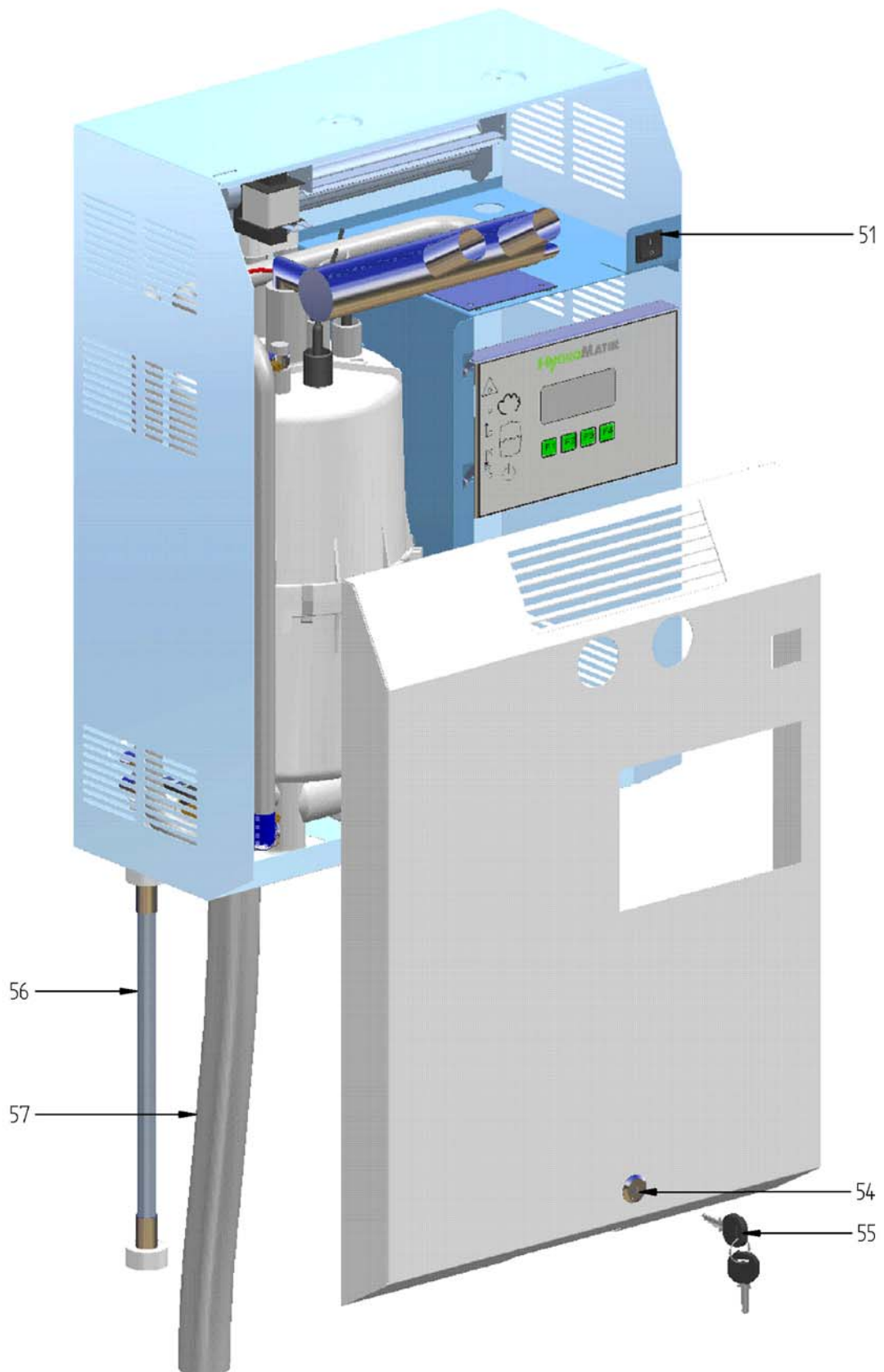


14. Exploded View



15. View of housing



11. Spare Parts

*	MS5	MS10	Article no.	Description
			E-2124010	Keys for safety, set=2pc.
			E-2124012	Safety lock incl. 2 keys
				Steam generation
	1		B-3216067	Steam cylinder CY4 transp. compl. with electrodes and Hand nuts **
		1	B-3204031	Steam cylinder CY8 transp. compl. with electrodes and Hand nuts **
16	1		E-3216043	Top part of steam cylinder CY4 empty
16		1	E-3226005	Top part of steam cylinder CY8 empty
19	1		B-3216044	Lower part of steam cylinder compl. with strainer **
19		1	B-3216007	Lower part of steam cylinder compl. with strainer **
17	1		E-3216046	O-ring seal for cylinder flange, transparent cylinder
17		1	E-3216010	O-ring seal for cylinder flange, transparent cylinder
35	1	1	E-3216011	O-ring seal for cylinder base
	1		E-3216021	Condensate plug DN 9
		1	E-2204035	Condensate plug DN 12
48	1		B-3216061	Electrodes compl. without hand nuts, set=3pc.
48		1	B-3204019	Electrodes compl. with hand nuts, set=3pc.
10	1		B-3204037	Sensor electrode compl. with hand nut, max. limitation
10		1	B-3204027	Sensor electrode compl. with hand nut, max. limitation
4	1	1	E-3216024	Plug-in contact with insulating hose for electrodes
10	3	3	E-3216025	Plug-in contact with insulating hose for sensorelectrode
18	12	12	E-3216022	Clamp for flange of transparent cylinder
37	1	1	E-3220000	Cylinder base DN 20/25/15/12
	1		E-3117014	Fan 60x120 mm
		1	E-3117012	Fan 60x180 mm
1	1		E-3126048	Steam nozzle
1		1	E-3126130	Steam nozzle
2	1		E-3126054	Adapter between steam cylinder and steam nozzle
2		1	E-3720008	Adapter between steam cylinder and steam nozzle
	0,41m	0,84m	E-2604014	Condensate hose steam nozzle - cylinder base DN12, per m
	1		B-3216077	maintenance kit for cylinder CY 4
		1	B-3216079	maintenance kit for cylinder CY 8
		1	B-2304063	Super Flush -upgrade kit-
				Water feed
25	1		B-2304081	Solenoid valve, servo controlled, straight type, 0,2-10 bar, 1,2l/min
25		1	B-2304083	Solenoid valve, servo controlled, straight type, 0,2-10 bar, 2,5l/min
		1	B-2304021	Solenoid valve, long-life, servo controlled, straight, 0,1-10bar,2,5l/min
56	1	1	B-2304031	Hose for water connection, 3/4" cap nuts on both sides
				Water feed without filling cup
	1	1	E-3616010	Elbow 90°, DN 12/14 E-2604004 / 02
	1	1	E-2304080	Erdungshülse
21	0,71m	0,90m	E-2604002	Connecting hose, solenoid valve - reduction, per m
	0,05m	0,05m	E-2604004	Connecting hose, reduction - cylinder base, per m

*	MS5	MS10	Article no.	Description
Water feed with filling cup				
5	1	1	B-3320406	Filling cup compl. with cover
	1	1	E-2325054	Earth plate for filling cup
2	0,32m	0,41m	E-2604002	Connecting hose, solenoid valve - filling cup, per m
3	0,37m	0,47m	E-2604004	Connecting hose, filling cup - cylinder base, per m
28	1	1	E-3616010	Elbow 90°, DN 12/14 E-2604004 / 02
Water drain				
	0,3m	0,4m	E-2604002	Connecting hose filling cup - pump, per m
	1	1	E-3425002	Adapter pump - drain hose. connections DN25/13
31	1	1	E-3220005	O-ring seal for adapter - pump
31	1	1	E-3220005	O-ring seal for cylinder base - pump
32	1	1	B-2404027	Drain pump without mounting set
	0,36m	0,45m	E-2604004	Drain hose filling cup - drain
57	1	1	E-2420423	Drain hose, 1 1/4", per m
	1		B-3401015	Drain hose system (pos. 19,23,24,25,27)
		1	B-3401017	Drain hose system (pos. 19,23,24,25,27)
6	1	1	E-2425004	Elbow with vent pipe
Control				
universal				
	1	1	E-2501005	Main contactor 16 A, 230 V
	1	1	E-2505206	Control fuse 1,6 A, 5x20 mm
4	1	1	B-3526019	Connecting cables for electrodes with plug-in contact, set=3pc
	1	1	B-2525051	Connecting cable for sensor electrode with plug-in contact, 630 mm
	x	x	E-0611001	Room hygrostat HG-Mini
Basic Control				
	1	1	B-2526201	Basic mainboard
	1	1	E-2502412	control switch, 2 pole
52	1	1	B-2120901	Mountinig plate (Basic)
Comfort Control				
	1	1	B-2526201	Basic mainboard
	1	1	E-2502412	control switch, 2 pole
52	1	1	B-2120903	Mounting plate (Comfort)
	1	1	B-2526401	Display (Comfort)
<p>If you order any spare parts, please specify type and serial number of the unit.</p> <p>* Exploded view</p> <p>** If the Super Flush System is installed, consider to order also a new nozzle (B-2304079), please.</p> <p>*** Maintenance set consists of: electrodes (without hand nuts), o-ring for steam hose adapter, o-ring for cylinder flange, o-ring for cylinder base</p>				