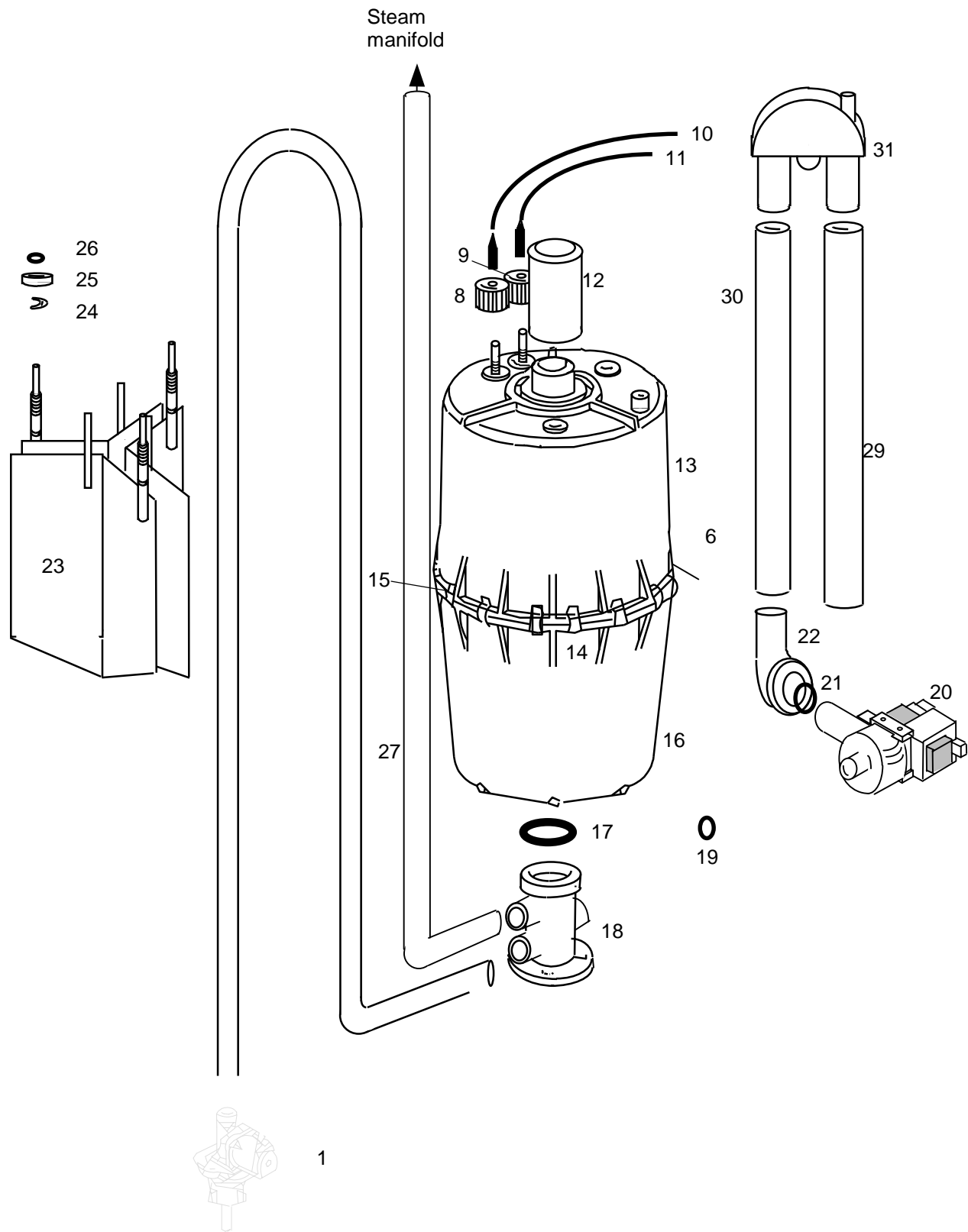
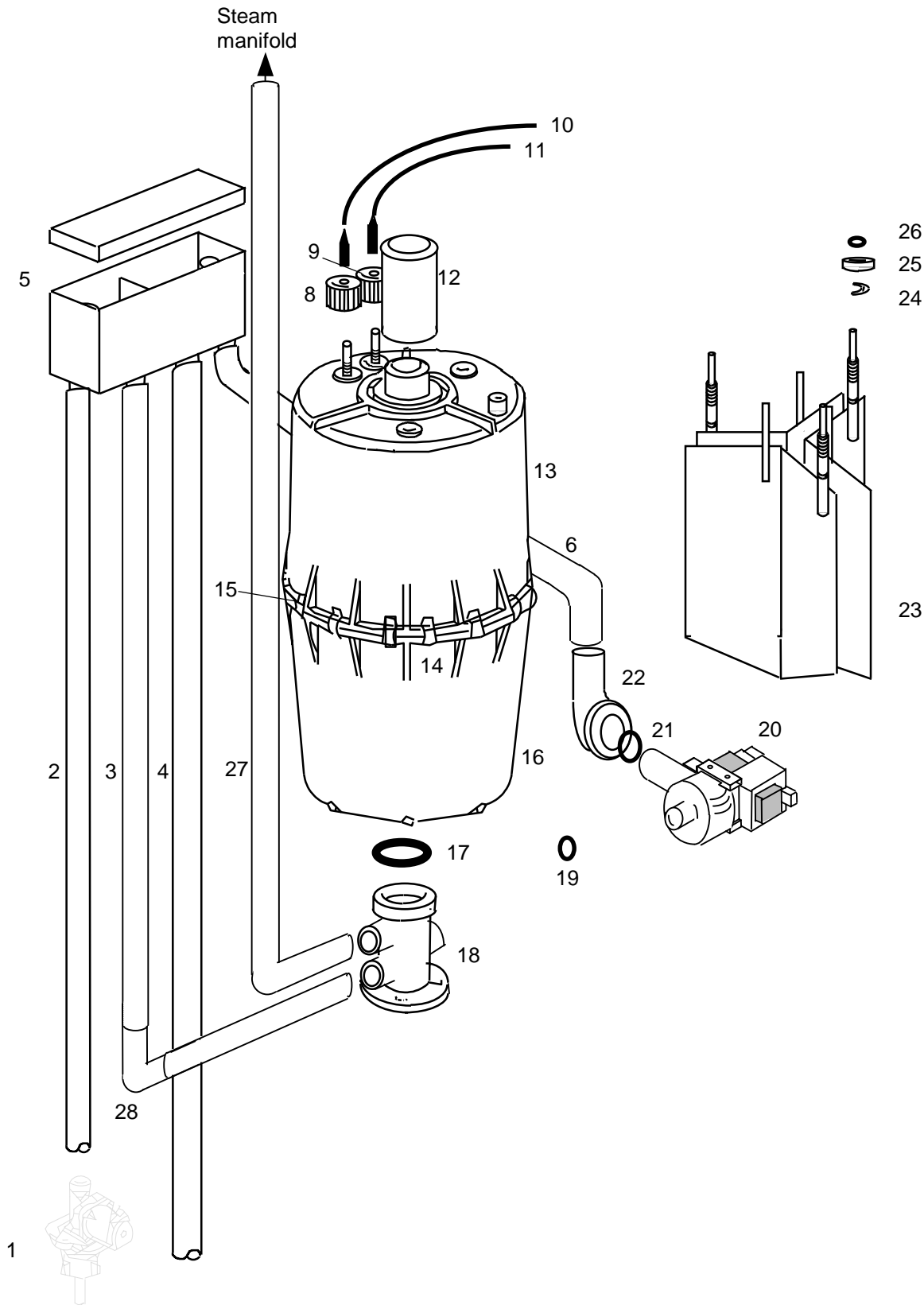


5.1 Exploded View Illustration without Filling Cup (standard)



5.2 Exploded View Illustration with optional Filling Cup



*	MS5	MS10	Article no.	Description
			E-2124010	Keys for safety, set=2pc.
			E-2124012	Safety lock incl. 2 keys
				Steam generation
	1		B-3216067	Steam cylinder CY4 transp. compl. with electrodes and Hand nuts *
		1	B-3204031	Steam cylinder CY8 transp. compl. with electrodes and Hand nuts *
13		1	E-3216043	Top part of steam cylinder CY4 empty
13	1	1	E-3226005	Top part of steam cylinder CY8 empty
16	1		B-3216044	Lower part of steam cylinder compl. with strainer *
16		1	B-3216007	Lower part of steam cylinder compl. with strainer *
15	1	1	E-3216046	O-ring seal for cylinder flange, transparent cylinder
15			E-3216010	O-ring seal for cylinder flange, transparent cylinder
18	1	1	E-3216011	O-ring seal for cylinder base
	1		E-3216021	Condensate plug DN 9
		1	E-2204035	Condensate plug DN 12
23	1		B-3216061	Electrodes compl. without hand nuts, set=3pc.
23		1	B-3204019	Electrodes compl. without hand nuts, set=3pc.
	1		B-3204037	Sensor electrode compl. without hand nut, max. limitation
		1	B-3204027	Sensor electrode compl. without hand nut, max. limitation
	1	1	E-3216024	Plug-in contact with insulating hose for electrodes
	3	3	E-3216025	Plug-in contact with insulating hose for sensorelectrode
14	12	12	E-3216022	Clamp for flange of transparent cylinder
	1	1	E-2204023	Drain filter
18	1	1	E-3220000	Cylinder base DN 20/25/15/12
	1		E-3117014	Fan 60x120 mm
		1	E-3117012	Fan 60x180 mm
	1		E-3126048	Steam nozzle
		1	E-3126130	Steam nozzle
12	1		E-3126054	Adapter between steam cylinder and steam nozzle
12		1	E-3720008	Adapter between steam cylinder and steam nozzle
27	0,41m	0,84m	E-2604014	Condensate hose steam nozzle - cylinder base DN12
				Water feed
1	1		B-2304081	Solenoid valve, servo controlled, straight type, 0,2-10 bar, 1,2l/min
1		1	B-2304083	Solenoid valve, servo controlled, straight type, 0,2-10 bar, 2,5l/min
	1	1	B-2304031	Hose for water connection, 3/4" cap nuts on both sides
				Water feed without filling cup
	1	1	E-3616010	Elbow 90°, reduction hose E-2604010/14
	1	1	E-2304080	Erdungshülse
	0,71m	0,90m	E-2604014	Connecting hose, solenoid valve - reduction
	0,05m	0,05m	E-2604010	Connecting hose, reduction - cylinder base
				Water feed with filling cup
5	1	1	B-3320406	Filling cup compl. with cover
	1	1	E-2325054	Earth plate for filling cup
2	0,32m	0,41m	E-2604014	Connecting hose, solenoid valve - filling cup
3	0,37m	0,47m	E-2604010	Connecting hose, filling cup - cylinder base
28	1	-	E-3616002	Elbows 90°, adapter drain pump - drain hose
				Water drain
6	0,3m	0,4m	E-2604014	Connecting hose filling cup - pump
22	1	1	E-3525002	Adapter pump - drain hose. connections DN25/13
21	1	1	E-3220005	O-ring seal for adapter - pump
19	1	1	E-3220005	O-ring seal for cylinder base - pump
20	1	1	B-2404021	Drain pump without mounting set
4	0,36m	0,45m	E-3426010	Drain hose filling cup - drain
			E-2420425	Drain hose, 1", per m

** see diagram 5.1

**	MS5	MS10	Article no.	Description
10 11				Electronic
	1	1	E-2501005	Main contactor 16 A, 230 V
	1	1	E-2505206	Control fuse 1,6 A, 5x20 mm
	1	1	B-3526017	Connecting cables for electrodes with plug-in contact, set=3pc
	1	1	B-2525051	Connecting cable for sensor electrode with plug-in contact, 630 mm
	x	x	E-0611001	Room hygrostat HG-Mini
				L3-Electronic
	1	1	B-3504071	L3-electronic pcb compl. without module holder
	1	1	E-2502412	Control switch,single pole, middle position "0"
	1	1	B-2120851	Mounting plate for electronics with foil
				EMP-Electronic
	1	1	E-2525170	EMP-electronic with display and control unit
	1	1	B-2502414	Control switch, single pole
	1	1	B-2120853	Mounting plate for electronics with foil

** see diagram 5.1

If you order any spare parts, please specify type and serial number of the unit.

* If the Super Flush System is installed, consider to order also a new nozzle (B-2304079), please.