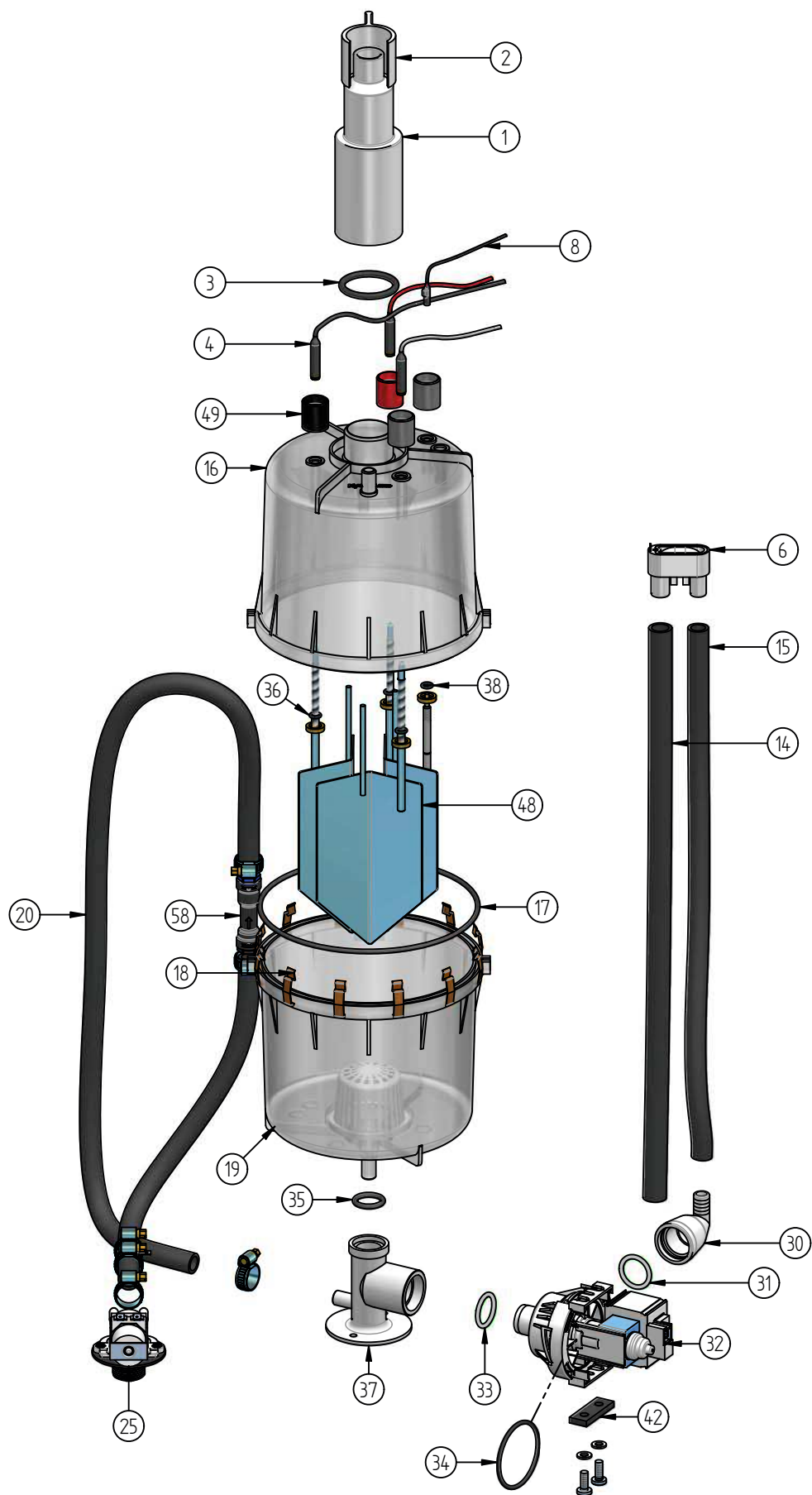


14. Exploded view



## 12. Spare Parts

*	FLE05	FLE15	FLE20	FLE25	FLE30	FLE40	FLE50	FLE65	FLE80	FLE100	FLE130	Article No.	Description
													<b>Steam generation</b>
8	1											B-3204029	Sensor electrode
8		1	1	1	1	1	1	1	1	1	1	B-2204073	Sensor electrode
	1	1	1	1	1	1	1	1	1	1	1	E-2204202	Hand nut M6, grey, for sensor electrode
	1	1	1	1	1	1	1	1	1	1	1	B-3216021	Cylinder flange clamps, set=24pc
37	1											E-3220002	Cylinder base
37		1	1	1	1	1	1	1	2	2	2	E-2206090	Cylinder base
	1											B-2214023	Mounting set for cylinder base
		1	1	1	1	1	1	1	2	2	2	B-3216023	Mounting set for cylinder base
1	1	1										E-2209018	Adapter for Steam hose, HVAC
1	1	1										E-2209008	Adapter for Steam hose, SPA
1			1	1	1	1	1	1	2	2	2	E-2209008	Adapter for Steam hose, HVAC + SPA
2	1	1	1	1	1	1	1	1	2	2	2	E-2209002	Clip for adapter
													<b>Steam generation, operating voltage from 240V to 480V</b>
	1											SP-03-00000	Steam cylinder CY08 compl.
		1										SP-04-00002	Steam cylinder CY17 compl. with 3 electrodes
			1									SP-04-00000	Steam cylinder CY17 compl. with 3 electrodes
				1								SP-04-00100	Steam cylinder CY17 compl. with 6 electrodes
					1	1			2			SP-05-00000	Steam cylinder CY30 compl.
							1	1		2	2	SP-06-00000	Steam cylinder CY45 compl.
48	1											B-3204021	Electrodes without hand nuts, set=3pc.
48		1										B-2204087	Electrodes without hand nuts, set=3pc.
48			1									B-2206221	Electrodes without hand nuts, set=3pc.
48				1								B-2204089	Electrodes without hand nuts, set=6pc.
48					1	1			2			B-2204093	Electrodes without hand nuts, set=6pc.
48							1	1		2	2	B-2204091	Electrodes without hand nuts, set=6pc.
49	1											B-2207101	Hand nuts M6 for cylinder CY08, set=3pc.
49		1	1									B-2207103	Hand nuts M8 for cylinder CY17, set=3pc.
49				1	1	1						B-2207105	Hand nuts M8 for cylinder CY17, set=6pc.
49							1	1	2	2	2	B-2207107	Hand nuts M10 for cylinder CY45, set=6pc.
	1											AC-03-00000	O-ringset (Pos. 3, 17, 31, 33, 34, 35, 36, 38)
		1	1									AC-04-00000	O-ringset (Pos. 3, 17, 31, 33, 34, 35, 36, 38)
				1								AC-04-00100	O-ringset (Pos. 3, 17, 31, 33, 34, 35, 36, 38)
					1	1			2			AC-05-00000	O-ringset (Pos. 3, 17, 31, 33, 34, 35, 36, 38)
							1	1		2	2	AC-06-00000	O-ringset (Pos. 3, 17, 31, 33, 34, 35, 36, 38)
													<b>Steam generation, special voltage 240V and below</b>
	1											SP-03-00000	Steam cylinder CY08 compl.
		1										SP-04-00000	Steam cylinder CY17 compl. with 6 electrodes
			1									SP-04-00001	Steam cylinder CY17 compl. with 6 electrodes
				1	1				2			SP-05-00001	Steam cylinder CY30 compl.
							1			2		SP-06-00001	Steam cylinder CY08 compl.
48	1											B-3204007	Electrodes without hand nuts, set=3pc.
48		1										B-2206221	Electrodes without hand nuts, set=6pc.
48			1									B-2206223	Electrodes without hand nuts, set=6pc.
48				1	1				2			B-2204063	Electrodes without hand nuts, set=6pc.
48							1			2		B-2206225	Electrodes without hand nuts, set=6pc.
													<b>Steam generation, special voltage from 500V</b>
	1											SP-03-00004	Steam cylinder CY08 compl.
		1	1									SP-04-00004	Steam cylinder CY17 compl. with 3 electrodes
				1								SP-04-00014	Steam cylinder CY17 compl. with 6 electrodes
					1	1			2			SP-05-00004	Steam cylinder CY30 compl.
							1	1		2	2	SP-06-00004	Steam cylinder CY45 compl.
48	1											B-3204015	Electrodes without hand nuts, set=3pc.
48		1	1									B-2204087	Electrodes without hand nuts, set=3pc.
48				1								B-2204089	Electrodes without hand nuts, set=6pc.
48					1	1			2			B-2204093	Electrodes without hand nuts, set=6pc.
48							1	1		2	2	B-2298007	Electrodes without hand nuts, set=6pc.

*	FLE05	FLE15	FLE20	FLE25	FLE30	FLE40	FLE50	FLE65	FLE80	FLE100	FLE130	Article No.	Description
													<b>Water feed</b>
25	1											WF-03-00010	Solenoid valve, 1,1l/min, 220-240V, 0,2 - 10bar, with mounting set
25		1	1	1								WF-04-00010	Solenoid valve, 2,3l/min, 220-240V, 0,2 - 10bar, with mounting set
25					1	1	1	1	2	2	2	WF-06-00010	Solenoid valve, 3,4l/min, 220-240V, 0,2 - 10bar, with mounting set
20	0,9	1,6	1,6	1,6	1,6	1,6	1,6	1,6	3,2	3,2	3,2	E-2604002	Connecting hose solenoid valve - cylinder base [m]
	1	1	1	1	1	1	1	1	2	2	2	E-2304080	Bush for earthing
58	1	1	1	1	1	1	1	1	2	2	2	E-2604094	Double check valve
18	6	6	6	6	6	6	6	6	12	12	12	E-8501064	Hose clamp 12-22mm
56	1	1	1	1	1	1	1	1	1	1	1	B-2304031	Hose for water connection, 0,6m, 3/4" cap nuts on both sides
	1											B-2425005	Pump-drain-hose-system (Pos. 6, 14, 15, 30, 31)
		1	1	1	1	1	1	1	2	2	2	B-2425009	Pump-drain-hose-system (Pos. 6, 14, 15, 30, 31)
32	1	1	1	1	1	1	1	1	2	2	2	B-2404027	Drain pump without mounting set, with 2 o-rings
42	1	1	1	1	1	1	1	1	2	2	2	B-2424014	Mounting set for drain pump
													<b>Electronics in general</b>
	1	1	1	1	1	1	1	1	1	1	1	CN-07-00020	Mainboard incl. Plug (please note serial no. of unit for order)
									1	1	1	CN-07-00030	Extension board for double units
	1	1	1	1	1	1	1	1	1	1	1	CN-07-00040	Relay board
	1	1	1	1	1	1	1	1	1	1	1	E-0510008	Display
	1	1	1	1	1	1	1	1	1	1	1	E-2502412	Control switch, double pole, middle position = "0"
													<b>Electronics, operating voltage over 240V to 480V</b>
	1											E-2507040	Main contactor 20A
		1	1	1	1	2	2		4			E-2507060	Main contactor 35A
								2		4	4	E-2507066	Main contactor 40A
	1											WR-03-00001	Connecting cables for electrodes and sensor electrode with plugs (Pos. 4, 5)
		1	1									WR-04-00001	Connecting cables for electrodes and sensor electrode with plugs (Pos. 4, 5)
				1								WR-04-00101	Connecting cables for electrodes and sensor electrode with plugs (Pos. 4, 5)
					1	1			2			WR-05-00001	Connecting cables for electrodes and sensor electrode with plugs (Pos. 4, 5)
							1			2		WR-06-00001	Connecting cables for electrodes and sensor electrode with plugs (Pos. 4, 5)
								1			2	WR-06-00101	Connecting cables for electrodes and sensor electrode with plugs (Pos. 4, 5)
													<b>Electronics, special voltage 240V and below</b>
	1	1										E-2507040	Main contactor 20A
				2	2	2			4			E-2507060	Main contactor 25A
							2			4		E-2507070	Main contactor 50A
	1											WR-03-00001	Connecting cables for electrodes and sensor electrode with plugs (Pos. 4, 5)
		1		1								WR-04-00101	Connecting cables for electrodes and sensor electrode with plugs (Pos. 4, 5)
					1	1			2			WR-05-00001	Connecting cables for electrodes and sensor electrode with plugs (Pos. 4, 5)
							1			2		WR-06-00101	Connecting cables for electrodes and sensor electrode with plugs (Pos. 4, 5)
													<b>Electronics, special voltage from 500V</b>
	1											E-2507040	Main contactor 20A
		1	1	1	1	2		2	4		4	E-2507060	Main contactor 35A
							1			2		E-2507070	Main contactor 50A
	1											WR-03-00001	Connecting cables for electrodes and sensor electrode with plugs
		1	1									WR-04-00001	Connecting cables for electrodes and sensor electrode with plugs
				1								WR-04-00101	Connecting cables for electrodes and sensor electrode with plugs
					1	1			2			WR-05-00001	Connecting cables for electrodes and sensor electrode with plugs
							1	1		2	2	WR-06-00001	Connecting cables for electrodes and sensor electrode with plugs

*	FLE05 FLE10	FLE15	FLE20	FLE25	FLE30	FLE40	FLE50	FLE65	FLE80	FLE100	FLE130	Article No.	Description
													<b>Accessories</b>
70	x	x										E-2604012	Steam hose DN25, per m
70	x	x	x	x	x	x	x	x	x	x	x	E-2604013	Steam hose DN40, per m
57	x	x	x	x	x	x	x	x	x	x	x	E-2420423	Drain hose 1 1/4", per m
57	x	x	x	x	x	x	x	x	x	x	x	E-2604002	Condensate hose DN12, per m
	x	x										E-2404004	Steam hose clamp DN25
	x	x	x	x	x	x	x	x	x	x	x	E-2604016	Steam hose clamp DN40
	x	x	x	x	x	x	x	x	x	x	x	E-2404010	Clamp for drain hose 1 1/4"
	x	x	x	x	x	x	x	x	x	x	x	E-8501064	Condensate hose clamp
	x											E-2604042	Connectors for steam distribution T-piece DN25, stainless steel
	x	x	x	x	x	x	x	x	x	x	x	E-2604023	Connectors for steam distribution T-piece DN40, stainless steel
	x	x	x	x	x	x	x	x	x	x	x	E-2604021	Connectors for condensate T-piece DN12
	x	x	x	x	x	x	x	x	x	x	x	B-2604091	Essence pump
	x	x	x	x	x	x	x	x	x	x	x	E-2604070	Hose, 6x1.5, for essence injection
	x	x	x	x	x	x	x	x	x	x	x	B-2604069	T-piece for essence injection, 2xDN40, 1xDN6

For ordering spare parts, a template can be found on the [www.hygromatik.com](http://www.hygromatik.com) website under the „Contact“ tab. Your spare parts order may as well be directed per e-mail to the HygroMatik main office using the address [hy@hygromatik.de](mailto:hy@hygromatik.de).

Please make sure to specify your unit model and serial number.